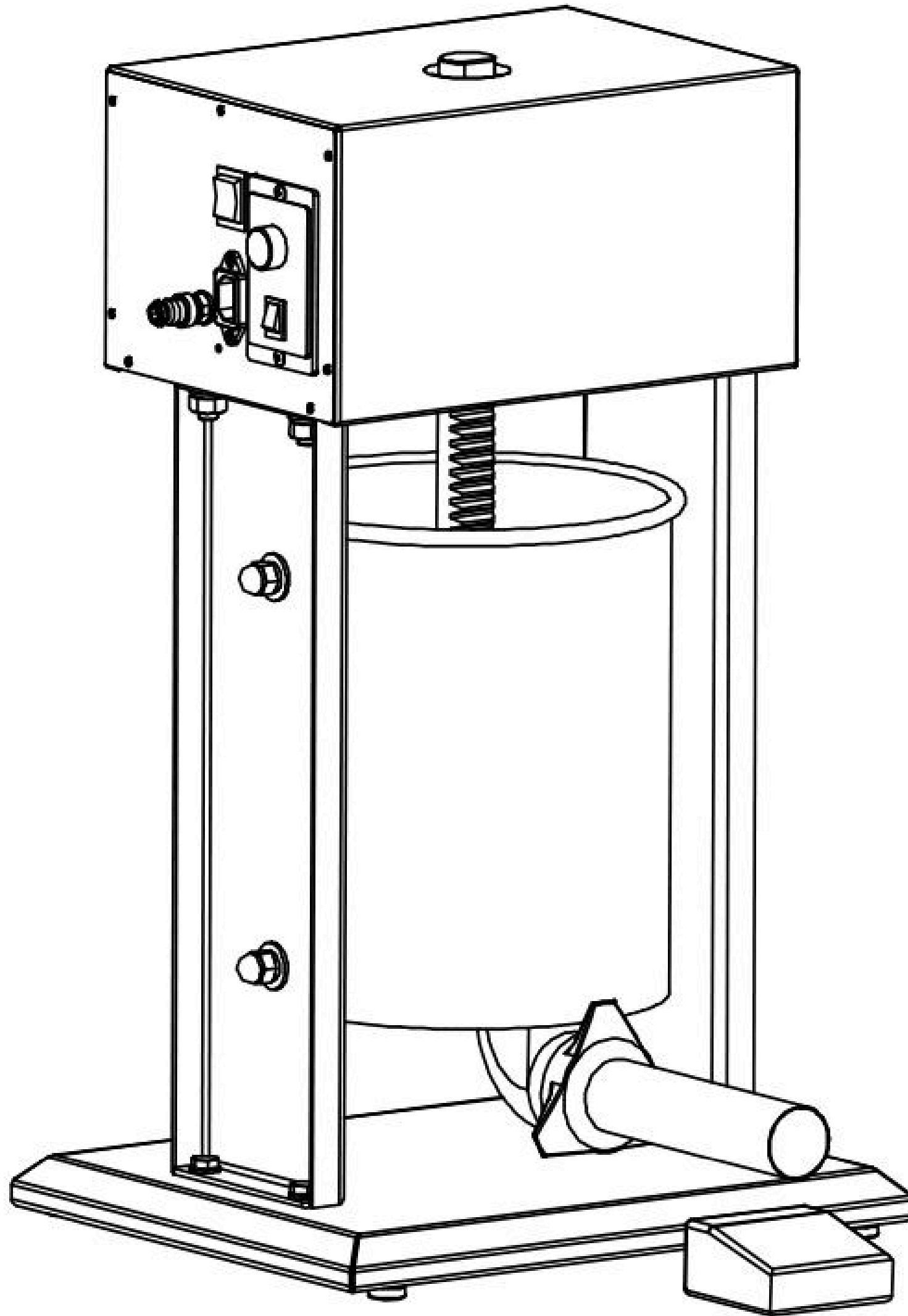


**MORGAN  
GASTRO®**

**ELECTRIC SAUSAGE STUFFER**  
*SMV10/SMV12/SMV15*



# **Electric Sausage Stuffer Instruction Manual**

[www.hakkabros.com](http://www.hakkabros.com)

**Contact Us For More Equipment And Technical Support**

# CONTENT

---

CHAPTER 1 COMPANY BRIEF INTRODUCTION.....	P1
CHAPTER 2 SAFETY SPECIFICATION.....	P2
CHAPTER 3 PRODUCT INTRODUCTION.....	P3
CHAPTER 4 ASSEMBLY AND OPERATION INSTRUCTION .....	P3-4
CHAPTER 5 EXCEPTION HANDLING.....	P5
CHAPTER 6 EXPLODED VIEW AND SPARE PARTS LIST.....	P6-7
CHAPTER 7 WIRING DIAGRAM.....	P8
WARRANTY CARD.....	P9

## CHAPTER 1 COMPANY BRIEF INTRODUCTION

---

Thanks for choosing our machines. We are a company who have specialized in the field of food processing machines for many years. The main products are spiral mixers, planetary mixers, meat grinders/mincers, meat slicers, meat mixers, sausage stuffers/fillers, meat tenderizers and so on. With the strength of good quality and after-sales service, we have won a reputation from the customers all around the world.

## CHAPTER 2 SAFETY SPECIFICATION

---

To make sure you can operate the machine properly, please read this instruction thoroughly before using the equipment. Please operate it safely.

1. Please keep the plastic bag well. Don't let the children play with it in case of suffocation.
2. Please keep this product out of reach of the children. They are not allowed to clean, use or do other operation without supervision.
3. This product is not recommend for the children or persons with limited physical, mental and sensory function unless they are supervised or guided by how to used it properly.
4. Notice: Please make sure to use the power supply is consistent with the voltage on nameplate and check the power cord, the main body as well as other parts are normal before use.
5. Notice: The core thickness of power supply cord should be equal to or more than the core thickness of power supply cord supplied by this product.
6. Please don't use the damaged power cord. If the power cord is damaged, please ensure to replace the qualified power cord supplied by the factory.
7. Place the power cord & the foot pedal switch smoothly without the operation of squeezing, bending, rubbing and pulling. Keep the product away from the heat source & the open fire, otherwise they will cause danger.
8. Insert the plug into the socket completely otherwise it will cause damage to the components due to poor contact.
9. Please don't use this product under the following conditions: ①When the product or the electric cord goes wrong; ②When the product falls down accidentally to cause damage or abnormal operation;
10. Please unplug the power supply before cleaning, assembling or disassembling the machine.
11. Warning! It's forbidden to put the main body & the electric cord into any liquids. The main body can only be rinsed by the wet towel and other parts must be rinsed when the product is cooled down completely.
12. Please don't use this product on the uneven, humid or non-heat-resistant surface in case of damage or in-validation.
13. Don't put any parts of the body or other objects in the machine during its operation.
14. When the machine is working, don't unplug the power plug directly, just unplug it when the machine is stop working.
15. Don't let the machine work automatically when it's unattended. If the machine is over-heating, please stop it & unplug the power plug.
16. When the machine is not in use or unattended after use, please unplug the power plug.
17. Please don't disassemble the product randomly. It's not allowed to let other things enter or insert inside the

TECHNICAL PARAMETER SUBJECT TO CHANGE WITHOUT NOTICE



product otherwise it will cause damage.

18. Electric shock hazard! It's forbidden for the non-professional staffs to repair the product otherwise it will cause the electric shock. When the malfunction happens, please find the professional staffs to repair it.

19. Only the spare parts supplied by the seller or the manufacturer can be used in this product. We don't take responsible for any malfunctions caused by spare parts provided by other manufacturers. These spare parts are not covered by the warranty.

20. Once the product causes fire accidentally, please power off and put out the fire under the premise of ensuring human safety. It's recommend to use the dry powder or carbon dioxide fire extinguisher first; If conditions do not permit, other substances may also be used to put out the fire.

## **CHAPTER 3 PRODUCT INTRODUCTION**

---

1. This product is divided into 2 kinds of working voltage: 110V and 220V respectively. Please choose it according to the local voltage.
2. Please make sure the voltage that you use is consistent with the voltage on the name plate and there is a ground core in the power socket.
3. The panel is used the way of popular digital display (combining digital tube with key press), which can prevent the electric shock of wet hands operation and the front dripping. The speed is used the way of 10 gears, which is rapid for adjusting speed and convenient for watching speed.
4. For convenience, this product provides 2 kinds of controlling modes: automatic mode and manual mode. To improve the efficiency, the up speed has been set as the highest speed which is nonadjustable. However, the down speed is adjustable, which can be used in many kinds of occasions.
5. The down speed can be adjusted as maximum 7.7MM/Sec in 110V/60Hz and maximum 6.7MM/Sec in 220V/50Hz.
6. The product shell is used the full stainless steel which is safe, non-toxic & easy to clean.
7. CE certificate has been approved.

## **CHAPTER 4 ASSEMBLY AND OPERATION INSTRUCTION**

---

### **1. Assembly:**

- (1) Choose the worktable with the suitable height, tilt or put down the machine, then assemble the #70 (Rubber mat).
- (2) Insert the #61 (Foot pedal switch) into the foot pedal socket, then screw on the nut (just tighten it up lightly).
- (3) Choose the suitable nozzle (external diameter  $\varnothing 16/22/32/38\text{mm}$  as standard), then assemble it on the

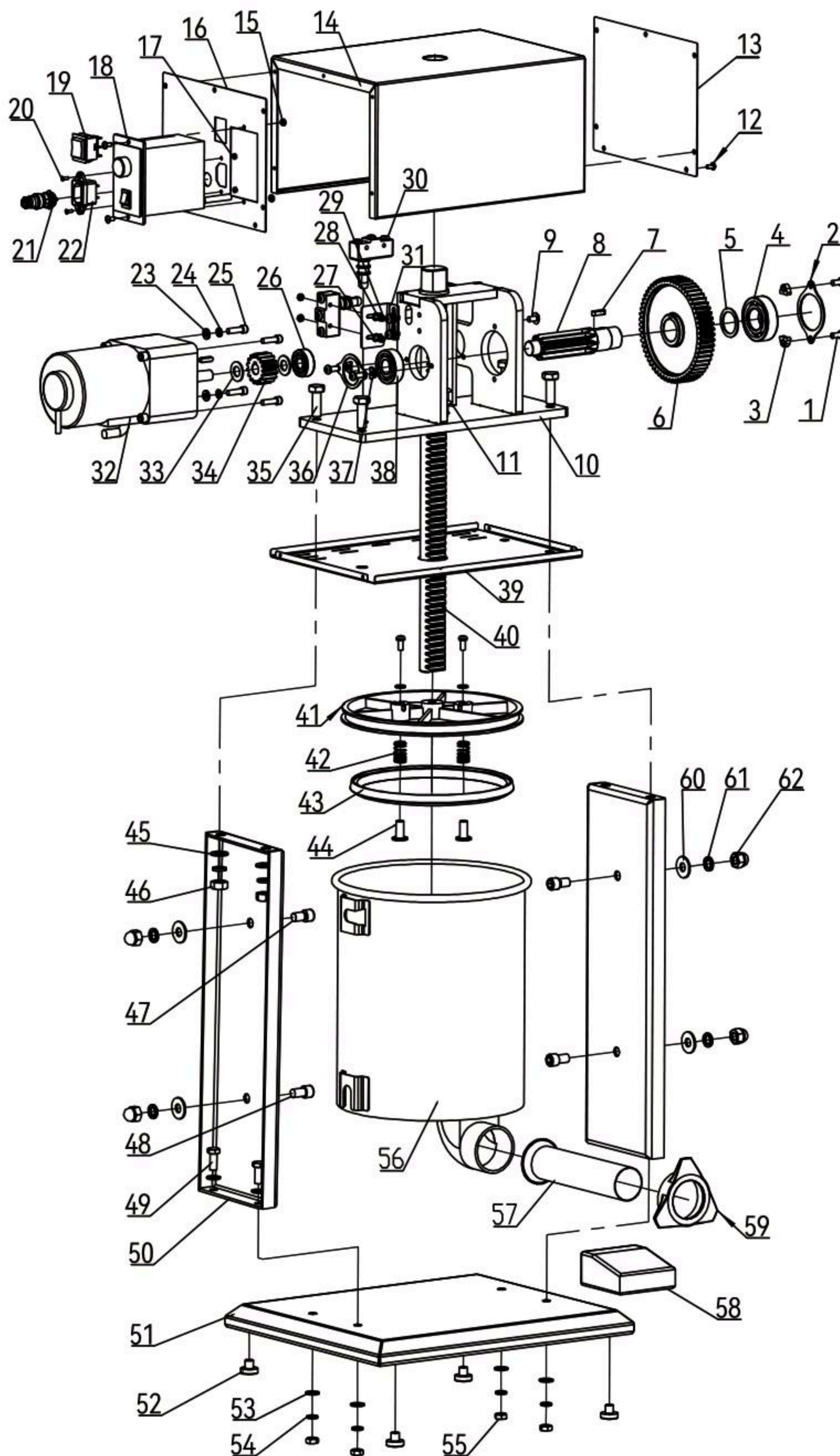
TECHNICAL PARAMETER SUBJECT TO CHANGE WITHOUT NOTICE

SPECIFICATIONS

Model	SMV10	SMV12	SMV15
Product Size	16.1 x 12.2 x 26 in	16.1 x 12.2 x 26.8 in	16.1 x 12.2 x 31 in
Capacity	10 L	12 L	15 L
Voltage/Frequency	AC110-120V/60Hz	AC110-120V/60Hz	AC110-120V/60Hz
Power	200 W	200 W	260 W
Speed Threshold	Stepless Speed Regulation	Stepless Speed Regulation	Stepless Speed Regulation
Bucket Fixed Mode	Removable and Tilt	Removable and Tilt	Removable and Tilt
Net Weight	54.6 Lbs	56.6 Lbs	59.9 Lbs
Gross Weight	62.3 Lbs	65.6 Lbs	69.2 Lbs



# EXPLOSIVE VIEW



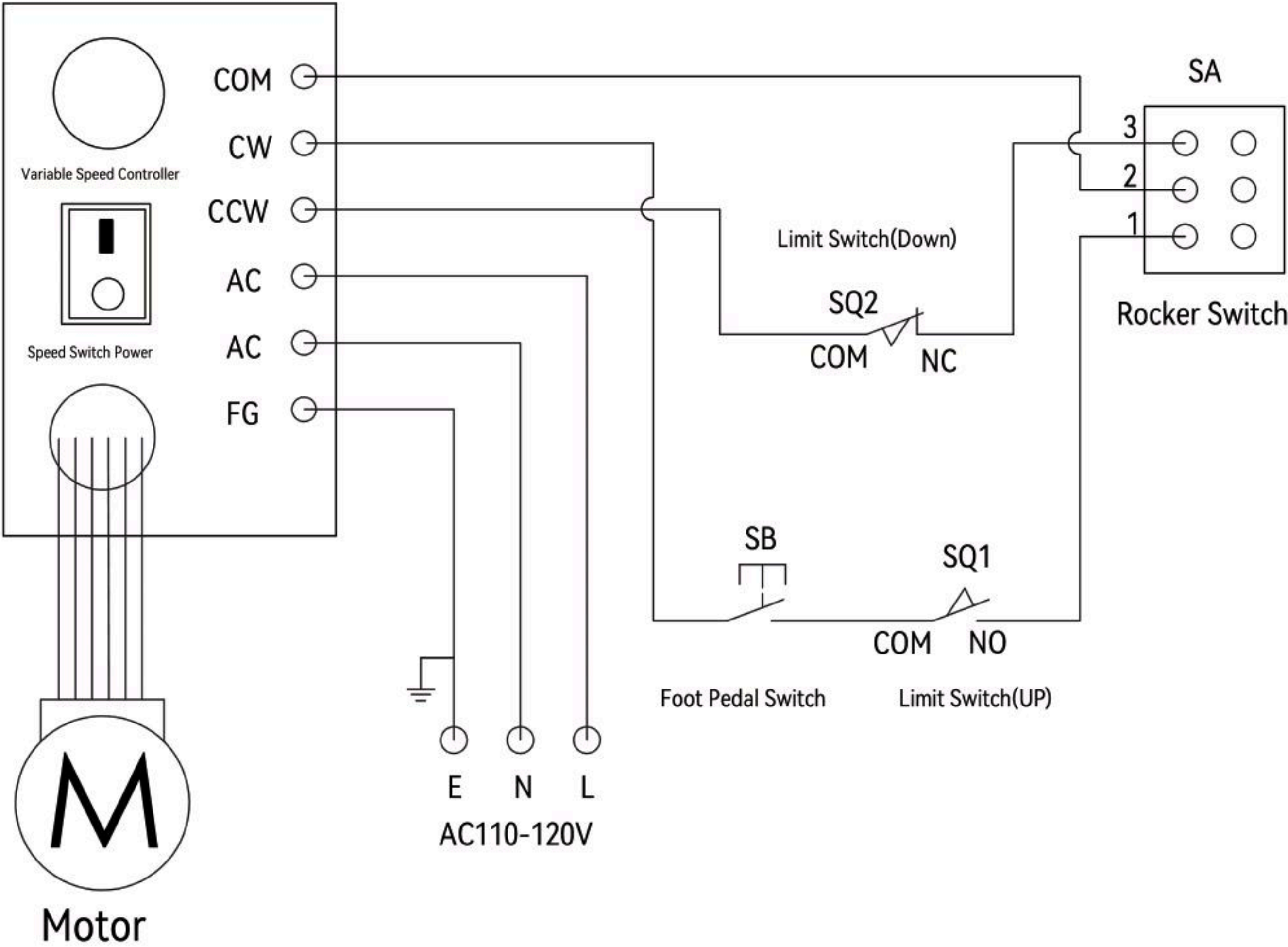


## PARTS LIST

No.	Name	QTY	No.	Name	QTY
1	Screw M6x12t	7	31	Fixed Base	1
2	Bearing Retainer 1	1	32	Motor	1 Set
3	Bearing Gasket 1	2	33	Closing Ring 2	2
4	Bearing 6205	1	34	Bearing 6205	1
5	Closing Ring 1	1	35	Screw M10x30	4
6	Gear Wheel	1	36	Bearing Retainer 2	1
7	Flat Key 5x18	2	37	Bearing Gasket 2	2
8	Rack Wheel Shaft	1	38	Bearing 6203	1
9	Screw M6x10	4	39	Middle Fixed Plate	1
10	Pinion Stand	1	40	Gear Rack	1
11	Flanged Brass Bushing	1	41	Piston	1
12	Screw M4x8	23	42	Exhaust Pin Spring	1
13	Back Plate	1	43	Sealing Washer	1
14	Cover	1	44	Exhaust Valves	1
15	Nut M4	5	45	Flat Washer $\phi$ 10	4
16	Lateral Plate1	1	46	Nut $\phi$ 10	4
17	Nut M3	2	47	Slot Screw M10x16	2
18	Speed Governor	1	48	Screw M10x16	2
19	Rocker Switch	1	49	Screw M8x20	4
20	Screw M3x8	2	50	Lateral Plate2	2
21	Aviation Plug	1	51	Pedestal	1
22	Socket	1	52	Sucker	4
23	Flat Washer $\phi$ 6	5	53	Flat Washer $\phi$ 8	8
24	Spring Washer $\phi$ 6	4	54	Spring Washer $\phi$ 8	4
25	Screw M6x20	1	55	Nut M8	4
26	Bearing 6201	1	56	Charging Basket	1
27	Flat Washer $\phi$ 4	3	57	Packed Pipe	1 Set
28	Spring Washer $\phi$ 4	3	58	Foot Switch	1
29	Screw M4x30	2	59	Trilobal Cap	1
30	Limit Switch	2	60	Flat Washer $\phi$ 10	4

61	Spring Washer $\phi 10$	8	62	Cap Nut M10	4
----	-------------------------	---	----	-------------	---

# SCHEMATIC CIRCUIT DIAGRAM





## **REPAIR AND MAINTENANCE**

1. Please unplug the power supply before cleaning.
2. Remove and clean all parts that come in contact with the sausage.
3. Wipe non-removable parts with a cloth to remove bacteria.
4. Lubricate moving parts and gears to extend product life.
5. Do not use corrosive or abrasive detergents for cleaning.
6. Store the machine in a dry, clean and secure place.

WARRANTY REGISTRATION  
RELEASE TYPE OR PRINT CLEARLY

NAME \_\_\_\_\_

ADDRESS \_\_\_\_\_

CITY \_\_\_\_\_ STATE \_\_\_\_\_ ZIP CODE \_\_\_\_\_

PHONE \_\_\_\_\_ PURCHASE DATE \_\_\_\_\_

PRODUCT MODEL: \_\_\_\_\_

Purchased for: ☐ Commercial use ☐ Personal use ☐ Other

Purchased by: \_\_\_\_\_

Products purchased from: ☐ Store ☐ Internet

THIS CARD MUST BE SENT TO THE STORE WHERE YOU  
PURCHASED TO VALIDATE WARRANTY

WARRANTY REGISTRATION  
RELEASE TYPE OR PRINT CLEARLY

NAME \_\_\_\_\_

ADDRESS \_\_\_\_\_

CITY \_\_\_\_\_ STATE \_\_\_\_\_ ZIP CODE \_\_\_\_\_

PHONE \_\_\_\_\_ PURCHASE DATE \_\_\_\_\_

PRODUCT MODEL: \_\_\_\_\_

Purchased for: ☐ Commercial use ☐ Personal use ☐ Other

Purchased by: \_\_\_\_\_

Products purchased from: ☐ Store ☐ Internet

THIS CARD MUST BE SENT TO THE STORE WHERE YOU  
PURCHASED TO VALIDATE WARRANTY